

# How to Photograph & Submit Your Art

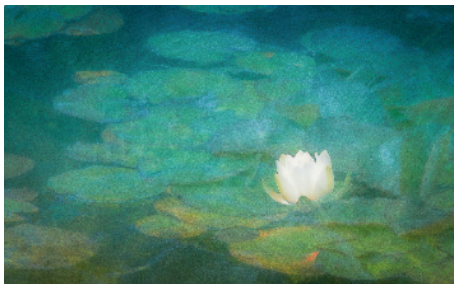
Artists spend so much time creating their art but often don't pay enough attention to a very important part of the process: photographing the work. A good photograph offers the first impression of your art and your professionalism.

When submitting your art to the Lend Me Your Walls (LMYW) program or the Featured Artist program, these guidelines will help you photograph your artwork like a pro.

1. Photograph your art straight on without glass over it.
2. Hang your artwork on a wall or up against a flat, straight up surface. Have your work at a height where the middle of your piece will be parallel to where your camera will be - hand held, tripod or resting sturdily on a table or other surface.

You can also place your artwork flat on the ground with the camera held above it at exactly a 90-degree angle to the ground. Make sure there are no shadows on the artwork.

3. If shooting indoors, do it in a room with plenty of windows and natural light. Outdoors, shoot when it is cloudy or overcast, as indirect sunlight provides the best lighting. Natural light can be a beautiful way to photograph your work as long as it is indirect.
4. Crop it just to the edges of the art.
5. Resize your jpg to 1200 pixels on the longest side at 300 dpi.
6. Title your jpg: LastName,Title or Description.jpg



Gastineau,CalmWater.jpg



Barker,Pendent10.jpg



Lind,WoodBowls5.jpg